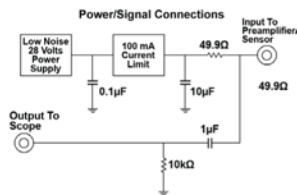
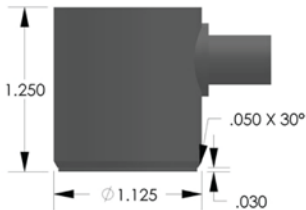


PRODUCT DATA SHEET

R30I-AST Sensor

Integral Preamp Sensor



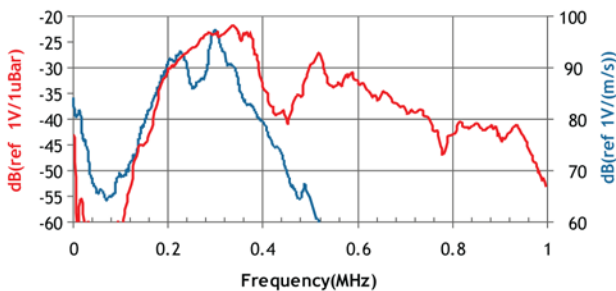
DESCRIPTION AND FEATURES

PAC's integral preamp sensors were specifically engineered to attain high sensitivity and have the capability to drive long cables without the need for a separate preamplifier. Incorporating a low-noise input, 40 dB preamplifier and a filter all inside the sensor housing, these transducers are completely enclosed in metal stainless steel (or aluminum) housings that are treated to minimize RFI/EMI interference. Care has also been taken to thermally isolate the critical input stage of the preamplifier in order to provide excellent temperature stability over the range of -35° to 75° C.

Their integrated Auto Sensor Test (AST*) capability allows these sensors to pulse as well as receive. This feature lets you verify the sensor coupling and performance at any time throughout the test.

APPLICATIONS

This sensor provides additional noise rejection for applications such as production line process monitoring including punch press monitoring, forming operations and stamping, and process control applications such as leak detection within process control plants in the presence of flow and process noises.



OPERATING SPECIFICATIONS

Dynamic

Peak Sensitivity, Ref V/(m/s).....	97 dB
Peak Sensitivity, Ref V/μbar.....	-22 dB
Operating Frequency Range.....	200-450 kHz
Resonant Frequency, Ref V/(m/s).....	300 kHz
Resonant Frequency, Ref V/μbar.....	350 kHz
Directionality.....	+/-1.5 dB

Environmental

Temperature Range.....	-35 to 75°C
Shock Limit.....	500 g
Completely enclosed crystal for RFI/EMI immunity	

Physical

Dimensions.....	1.13"OD X 1.23"H
	29 mm OD X 31 mm H
Weight.....	75 grams
Case Material.....	Stainless Steel (304)
Face Material.....	Ceramic
Connector.....	BNC
Connector Locations.....	Side

Electrical

Gain.....	40 dB
Power Requirements.....	20-30 VDC @ 25 mA
Dynamic Range.....	> 87 dB
Noise Level (RMS RTI).....	< 3 μV
Output Drive Impedance.....	50 Ω
Grounding.....	Case Grounding, Isolated from mounting surface

ORDERING INFORMATION AND ACCESSORIES

R30I-AST	R30I-AST
Cable (specify length in 'XX' m at end of PN)	1234 - X
Magnetic Hold-Down	MHR30I
Amplifier Subsystems	AE2A, AE5A

Sensors include

NIST Calibration Certificate & Warranty

* AST — Auto Sensor Testing feature allows AE systems to control the sensor as a pulser and a receiver at the same time. It can therefore characterize its own condition as well as send out a simulated acoustic emission wave that other sensors can detect, so the condition of the nearby sensors also can be tested.

